



**STScI** | SPACE TELESCOPE  
SCIENCE INSTITUTE

EXPANDING THE FRONTIERS OF SPACE ASTRONOMY

## Getting Involved in the Community Definition of Roman's Core Community Surveys

---

Karoline Gilbert

Project Scientist, Roman Mission Office





## Top Level Goal for Defining the Core Community Surveys

---

*Maximize the overall science return of Roman's wide field infrared surveys*

*While meeting Mission requirements focused on cosmology and exoplanets*



## Top Level Goal for Defining the Core Community Surveys

---

*Maximize the overall science return of Roman's wide field infrared surveys*

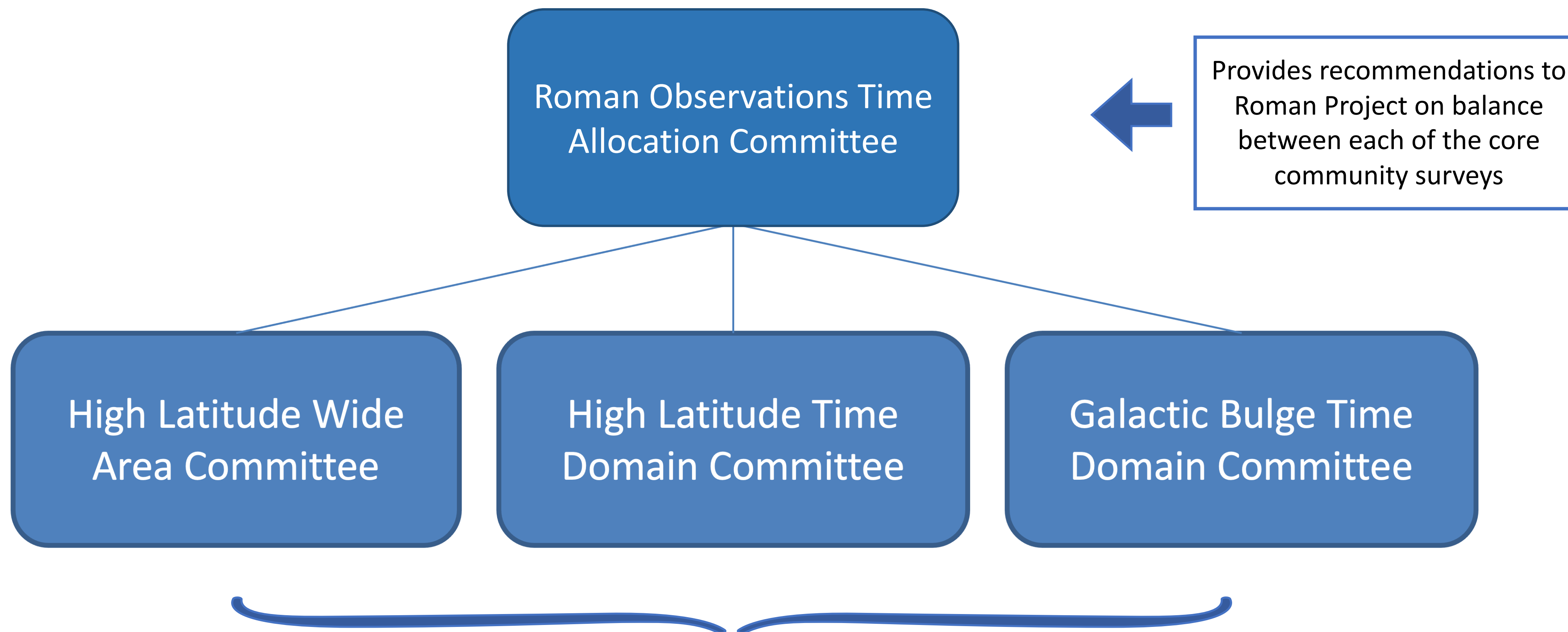
*While meeting Mission requirements focused on cosmology and exoplanets*

The existing survey strategies served their primary function in showing the mission can meet its requirements.

*The actual surveys to be implemented will be defined by the astronomical community.*



# Strategy for Defining the Core Community Surveys

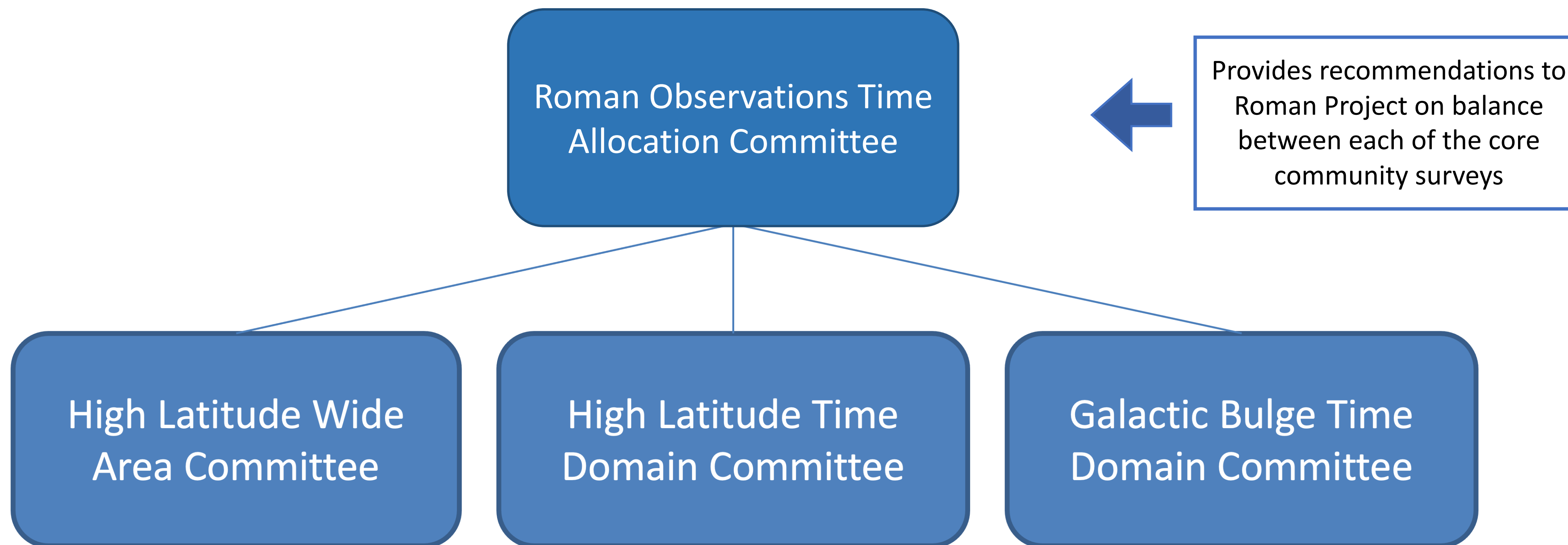


Evaluate initial community input; solicit additional, more targeted community input through a variety of channels; evaluate survey options against science metrics; produce recommendations for survey implementations with options for enhancements/descopes





# Strategy for Defining the Core Community Surveys



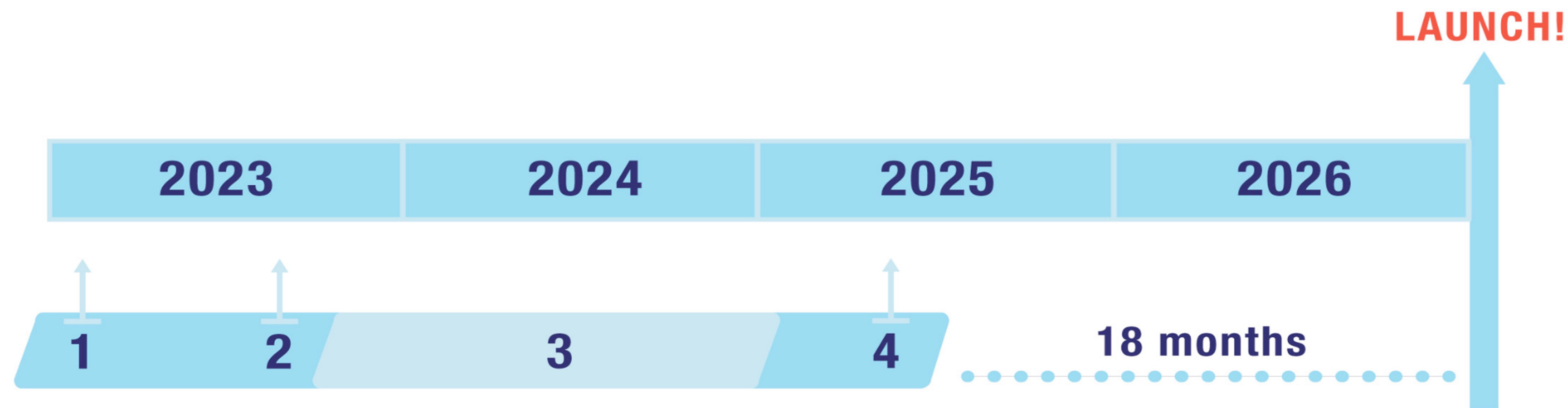
These committees will be *your* committees, and will be charged with understanding and representing the full breadth of the astronomy community's interests in Roman's Core Community Surveys.

*There will be no "survey teams" selected to define or implement the surveys.*





# Timeline for Defining the Core Community Surveys



[Newsletter Article  
Summarizing Science  
Pitch Submissions](#)

(1) Initial Request for Community Input – calls for science pitches and white papers

(2) Formation of Core Community Survey Definition Committees

***Self-nominations are due Aug 14!***

(3) Committee-driven investigations, deliberations, and gathering of additional community input, including community workshops

(4) Final report detailing Core Community Survey observations due to Project



[Call for Self-nominations  
\(Including links to  
submitted science pitches  
and white papers\)](#)





## Serving on the Survey Definition Committees: Who are we looking for?

---

We will be looking to compose committees reflecting

- the breadth of science the community wants to see enabled by Roman's community surveys
- the diversity of the astronomical community who will utilize Roman's data

With committee members who

- have significant scientific, technical, or community-building expertise relevant to the work of defining a core community survey
- have a community-oriented mindset

*If you have relevant expertise for helping to define a Roman Core Community Survey and the capacity to serve on a committee, please consider self-nominating.*



# Additional Ways to Engage with Roman

---





# Multiple Ways for the Community to Engage with Roman

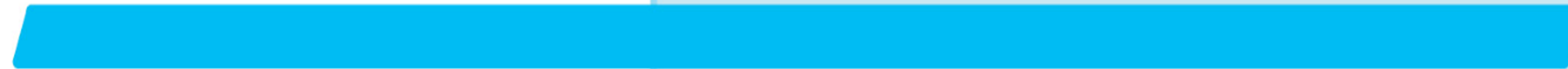
LAUNCH!

2023 2024 2025 2026 2027 2028 2029 2030 2031

Community-led definition of Roman's  
Core Community Surveys



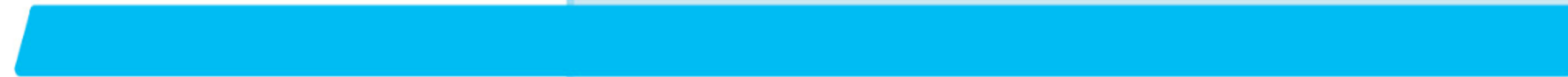
Engage with Project Partners  
on Specific Technical Topics



Funded Preparatory Science Activities  
(via NASA ROSES Opportunities)



Join Roman WFI  
Science Collaboration



General Investigator Opportunities  
(Principal Investigator-led Survey and  
Data Analysis Proposals)



Newsletter  
article  
summarizing  
ways to engage  
with Roman



# Engaging with Roman: Additional Opportunities

## Stay Up To Date

- Roman Community Forum – nominally the 3<sup>rd</sup> Wednesday of each month
- Roman [Virtual Lecture Series](#)
- Roman Mailing Lists
  - Check myST account preferences – subscribe to “Roman Updates” for STScI Roman news and newsletters
    - ▶ Or subscribe by sending a blank email to [roman\\_soc\\_news-subscribe-request@maillist.stsci.edu](mailto:roman_soc_news-subscribe-request@maillist.stsci.edu)
  - Join the Roman Project mailing list: email [roman-news-join@lists.nasa.gov](mailto:roman-news-join@lists.nasa.gov)
  - [Sign up](#) for the IPAC Roman mailing list

## Reach out to your representatives

- Roman Science Interest Group (RSIG) advises Roman Project Science Office at GSFC
- Roman ST Advisory Committee (RSTAC) – advises the STScI Director

## Attend the on-going series of Roman science conferences

- June 2023 “[Roman Science Inspired by Emerging JWST Results](#)”: [playlist on YouTube](#) and materials [on Zenodo](#)
- Look for next one to be held at IPAC in 2024



[Roman  
Community  
Forum](#)



[RSIG](#)



[RSTAC](#)